

# INNOVATION VOUCHERS GUIDE FOR SMES



RESEARCH  
& INNOVATION  
FOUNDATION



**WHO IS THIS  
PROGRAMME  
FOR?**

---

**WHY  
SHOULD  
YOU APPLY?**

---

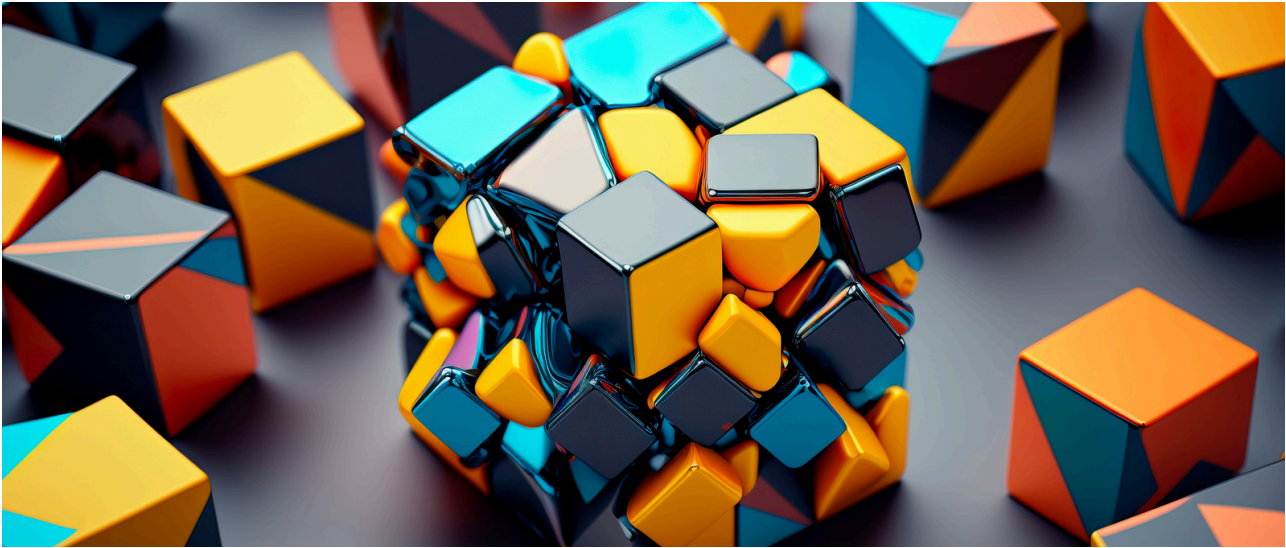
**HOW DO I  
FIND  
PARTNERS?**

---

**KEY DATES  
AND  
TIMELINE**

---

**More info INSIDE**



## ARE YOU AN SME LOOKING TO INNOVATE AND GROW?

Get a **€10,000 Voucher** to collaborate with Universities, Research Organizations or Innovative SMEs to access cutting-edge expertise to help you develop innovative products, services, or solutions.

---

## WHO IS THIS PROGRAMME FOR?

- SMEs with **4 to 29 full-time employees** that have sales and turnover in your last audited financial statements. These SMEs should not be under the control of another enterprise.
- Universities, Research Organizations and Innovative Companies that seek to establish themselves as innovation service providers and build ties with local industry.

---

## WHY SHOULD YOU APPLY?

Enterprises are under pressure to remain competitive and meet evolving customer needs. By integrating new technologies, you can enhance your products, streamline operations, improve customer experience and drive long-term success.

---

## HOW DO I FIND PARTNERS?

1. From the list of Universities, Research Organizations and SMEs funded by RIF or European Framework Programmes.
2. Register on RIF's Partner Search Tool and describe your challenges to find the right partner.
3. Contact the local Technology Transfer Officers of Universities and Research Organizations.
4. Join one of our upcoming matchmaking events on 6<sup>th</sup> May 2025 11.00am or 8<sup>th</sup> May 2025 11.00am

# WHAT CAN YOU USE THE MONEY FOR?

Funding covers up to **85%** of eligible external services. You can use the voucher for:

- **Contracted Research:** Hire experts to solve specific problems or improve your product.
- **Measurements, Tests and Analyses:** Enhance products through rigorous testing and analysis.
- **Access to Research/Laboratory Facilities:** Use specialized equipment or lab space for research.
- **Prototype Design and Development:** Create or improve a prototype.

For example, but not limited to....



- **Leverage AI** to streamline operations, personalize customer experience, automate tasks.
- **Discover new materials** to make your product tastier, stronger, more appealing, lighter.
- **Utilize Big Data** to gain deep insights into customer behavior to aid decision making
- **Develop eco-friendly packaging** that is cost-effective and maintains product quality
- **Implement IoT** to make products smarter, enhance customer experience or run leaner.
- **Explore green technologies** to improve energy efficiency, decrease waste, save water
- **Test new products** for functionality, safety, efficiency, compatibility, etc.





## READY TO INNOVATE AND GROW? APPLY NOW!

To apply, register on the [IRIS portal](#) and submit the General Information & Budget (Part A) online, along with the Technical Annex (Part B) to be uploaded as a PDF and support documentation.



## KEY DATES AND TIMELINE

- Submit an application anytime until the deadline of **30<sup>th</sup> May 2025**
- You will receive a funding decision in max. **4 weeks** from your submission date.
- The proposed project can last **up to 6 months**
- Funding is available **until the available budget is allocated**

## RECEIVE THE MONEY?

- After the **university, research organization or innovative SME** completes the agreed work, submit a **Progress Report** and a **Payment Request** (including the original invoice).
- Once reviewed and approved by the RIF, **85% of the service cost** will be paid directly to them. If the invoice amount is lower than the voucher value, payment will be based on the actual cost.

## IMPORTANT NOTE:

CERTAIN SECTORS LIKE FISHERY, AQUACULTURE, AND PRIMARY AGRICULTURE PRODUCTION ARE NOT ELIGIBLE FOR FUNDING.

# MORE INFORMATION



**Call for Proposals**

**PARTNER SEARCH  
TOOL**

**MANUAL (VIDEO)**



**LIST OF UNIVERSITIES, ROS AND SMES**



**Partner Support Centre: [support@research.org.cy](mailto:support@research.org.cy) | 22 205000**



RESEARCH  
& INNOVATION  
FOUNDATION